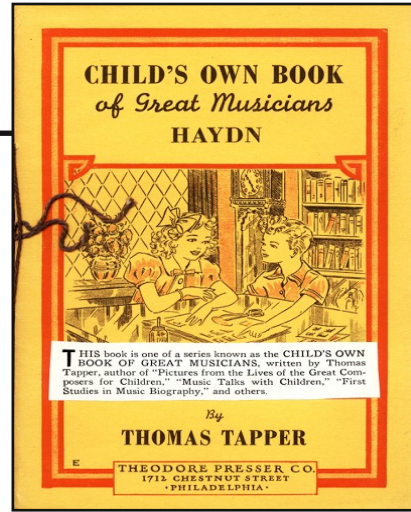
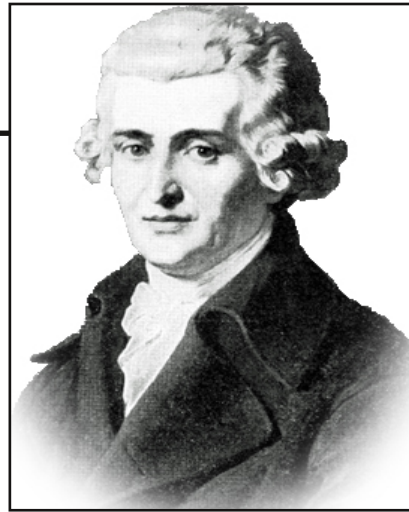


Haydn



A large rectangular area with a black border, containing ten sets of handwriting lines. Each set consists of a solid top line, a dashed middle line, and a solid bottom line.

Franz Joseph Haydn



March 31, 1732 – May 31, 1809

Handwriting practice area with multiple sets of lines. Each set consists of a solid top line, a dashed middle line, and a solid bottom line.

The image shows a handwriting practice sheet. It features a large rectangular frame containing ten sets of horizontal lines for writing. Each set consists of three lines: a solid top line, a dashed middle line, and a solid bottom line. In the top right corner of the main frame, there is a smaller, empty rectangular box. Additionally, there is a short horizontal line extending from the top left of the main frame.

A blank lined paper template. The page features a large rectangular border. Inside this border, there are 20 horizontal lines for writing. The lines are evenly spaced and extend across most of the page width. On the right side of the page, there is a smaller, empty rectangular box that overlaps the main writing area. This box is positioned in the upper right quadrant of the page.