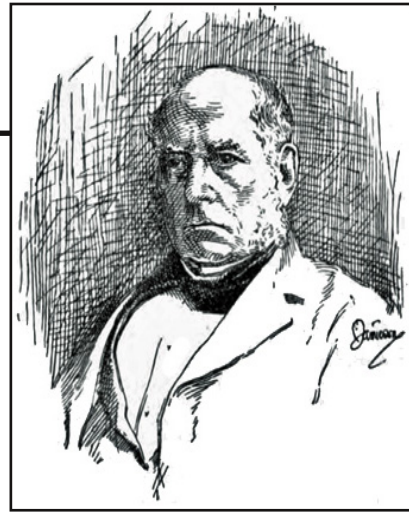




# Henry Bessemer

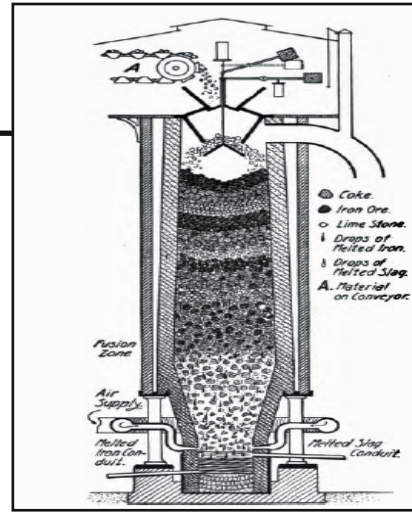


January 19, 1813 – March 15, 1898

Handwriting practice area with multiple sets of lines. Each set consists of a solid top line, a dashed middle line, and a solid bottom line. There are 10 such sets of lines arranged vertically.

The image shows a handwriting practice sheet. It features a large rectangular frame containing several sets of primary-ruled lines. Each set consists of three horizontal lines: a solid top line, a dashed middle line, and a solid bottom line. There are 10 such sets of lines arranged vertically. In the upper right corner of the main writing area, there is a smaller, empty rectangular box. A single horizontal line is drawn above the top-left corner of the main writing area.

# Blast Furnace



---

---

---

---

---

---

---

---

---

---

---

---

---

---

---

---

---

---

---

---

---

---

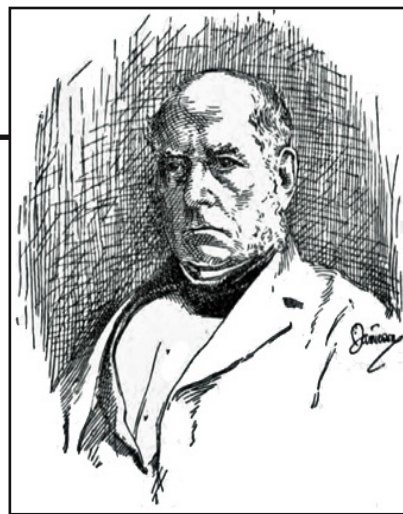
---

---

---

---

# Henry Bessemer



January 19, 1813 – March 15, 1898

---

---

---

---

---

---

---

---

---

---

---

---

---

---

---

---

---

---

---

---

---

---

---

---

---

---

---

---

---

This image shows a blank sheet of lined paper designed for writing. The page features a large rectangular border. Inside this border, there are horizontal lines for writing. On the right side of the page, there is a smaller, empty rectangular box, likely intended for a drawing or a specific type of note. The lines are evenly spaced and extend across the width of the page.