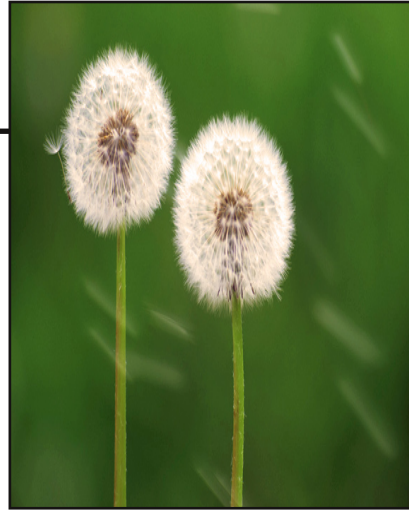


How Seeds Find New Homes (Dispersal)



Handwriting practice area with multiple sets of lines. Each set consists of a solid top line, a dashed middle line, and a solid bottom line. There are five such sets of lines arranged vertically within a large rectangular frame.

The image shows a handwriting practice sheet. It features a large rectangular frame containing several sets of horizontal lines for writing. Each set consists of three lines: a solid top line, a dashed middle line, and a solid bottom line. There are 10 such sets of lines. In the top right corner of the main frame, there is a smaller, empty rectangular box. A horizontal line is drawn above the top left corner of the main frame.

A blank lined paper template. The page features a large rectangular border. Inside this border, there are 20 horizontal lines for writing. The lines are evenly spaced and extend across most of the page width. On the right side of the page, there is a vertical rectangular box that overlaps the main writing area. This box is empty and appears to be a placeholder for a drawing or a specific section of text. The overall layout is clean and minimalist, suitable for a student's notebook or a writing template.