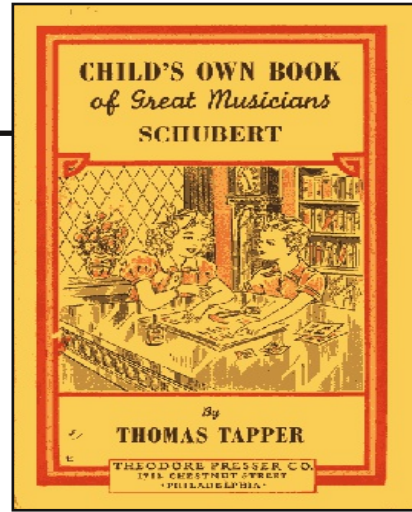
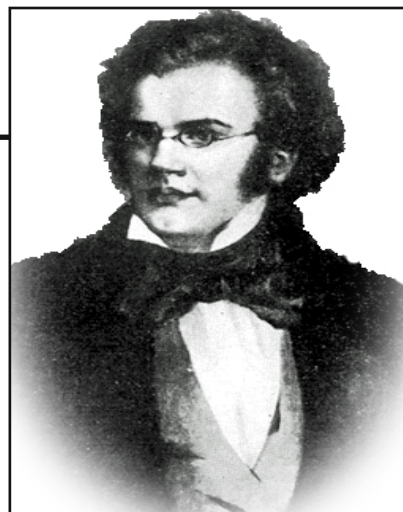


Schubert



A large rectangular area containing ten sets of handwriting lines. Each set consists of a solid top line, a dashed middle line, and a solid bottom line, providing a guide for letter height and placement.

Franz Schubert



January 31, 1797 – November 19, 1828

Handwriting practice lines consisting of a solid top line, a dashed middle line, and a solid bottom line.

Multiple sets of handwriting practice lines, each consisting of a solid top line, a dashed middle line, and a solid bottom line, for writing practice.

The image shows a handwriting practice sheet. It features a large rectangular frame containing ten sets of horizontal lines for writing. Each set consists of three lines: a solid top line, a dashed middle line, and a solid bottom line. In the top right corner of the main frame, there is a smaller, empty rectangular box. The entire sheet is designed for practicing letter formation and alignment.

A blank sheet of lined paper with a rectangular box on the right side. The paper has horizontal lines for writing. The box is positioned in the upper right quadrant of the page.