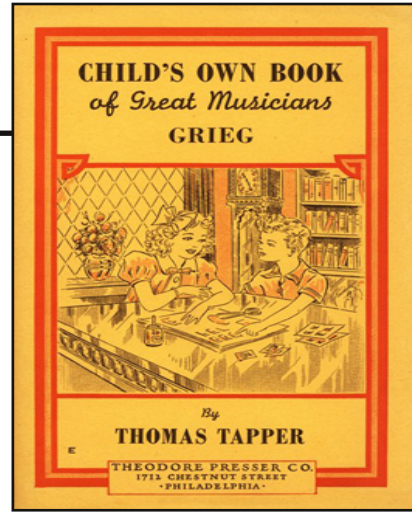
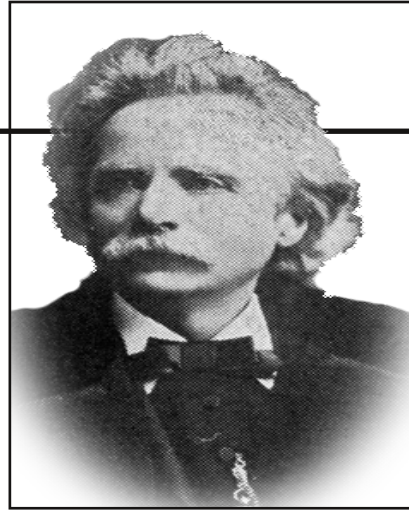


# Grieg



Handwriting practice lines consisting of solid top and bottom lines with a dashed middle line. There are 10 sets of these lines on the page.

# Edvard Grieg



June 15, 1843 – September 4, 1907

Handwriting practice lines consisting of a solid top line, a dashed middle line, and a solid bottom line.

Multiple sets of handwriting practice lines, each consisting of a solid top line, a dashed middle line, and a solid bottom line, arranged vertically down the page.

Variation on a German  
Melody Op. 1

Alla marcia.

pp

Handwriting practice area with multiple sets of three-line guides (top solid line, middle dashed line, bottom solid line) for copying the musical notation.



The image shows a handwriting practice sheet. It features a large rectangular frame containing several sets of horizontal lines for writing. Each set consists of three lines: a solid top line, a dashed middle line, and a solid bottom line. There are 10 such sets of lines arranged vertically. In the upper right corner of the main frame, there is a smaller, empty rectangular box. The entire sheet is designed for practicing letter formation and alignment.





Variation on a German  
Melody Op. 1

A large rectangular box containing 15 horizontal lines for musical notation, intended for a student to practice the piece.





A blank sheet of lined paper with a rectangular box on the right side. The paper has horizontal lines for writing. The box is positioned in the upper right quadrant of the page.