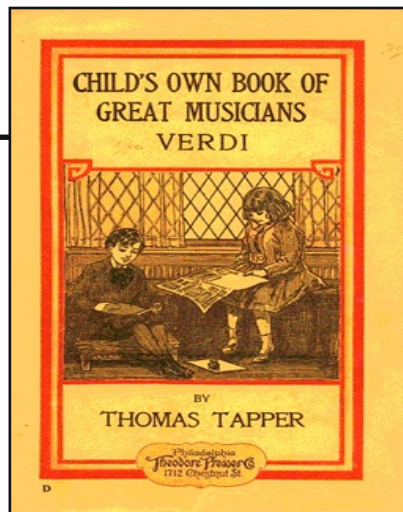
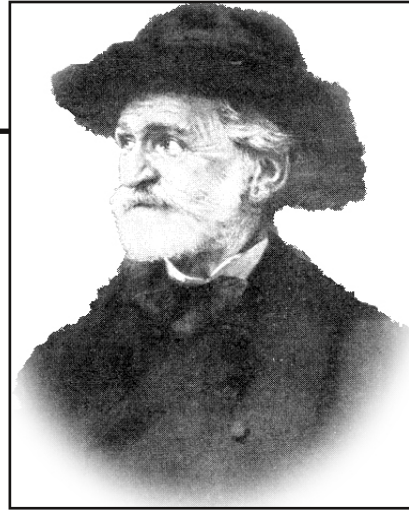


Verdi



Handwriting practice area with multiple sets of lines. Each set consists of a solid top line, a dashed middle line, and a solid bottom line. There are 10 such sets of lines provided for practice.

Giuseppe Verdi



October 10, 1813 – January 27, 1901

Handwriting practice area with multiple sets of lines. Each set consists of a solid top line, a dashed middle line, and a solid bottom line. There are four such sets of lines on the page.

Verdi Home

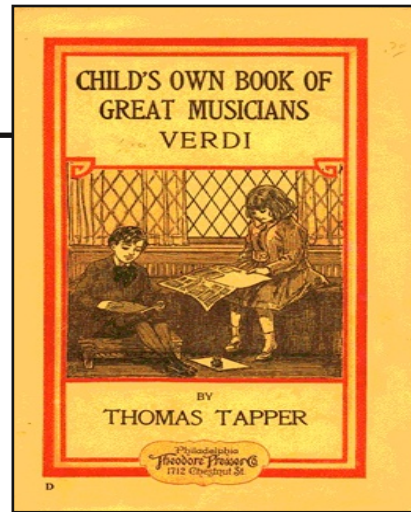


Handwriting practice lines consisting of a solid top line, a dashed middle line, and a solid bottom line.

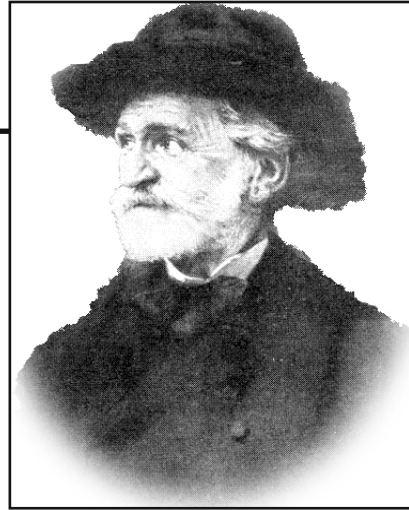
Multiple sets of handwriting practice lines, each consisting of a solid top line, a dashed middle line, and a solid bottom line, for writing practice.

The image shows a handwriting practice sheet. It features a large rectangular frame containing ten sets of horizontal lines for writing. Each set consists of three lines: a solid top line, a dashed middle line, and a solid bottom line. In the top right corner of the main frame, there is a smaller, empty rectangular box. The entire sheet is designed for practicing letter formation and alignment.

Verdi



Giuseppe Verdi



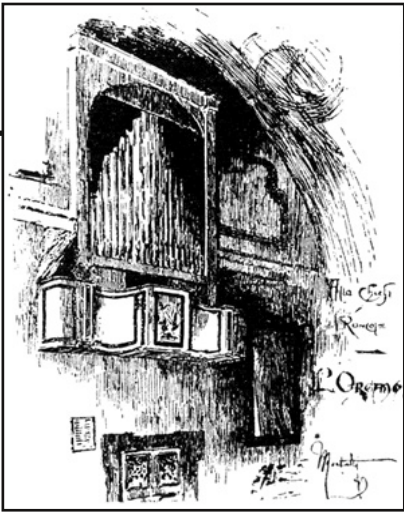
October 10, 1813 – January 27, 1901

A large rectangular frame containing several horizontal lines for writing, intended for a student to write about Giuseppe Verdi. The lines are spaced evenly and extend across most of the width of the frame.

Verdi Home



Organ at Roncole



Lined writing area with 14 horizontal lines for notes.

A blank lined paper template. The page features a large rectangular border. Inside this border, there are 20 horizontal lines for writing. The lines are evenly spaced and extend across most of the page width. On the right side of the page, there is a smaller, empty rectangular box that overlaps the main writing area. This box is positioned in the upper right quadrant of the page.