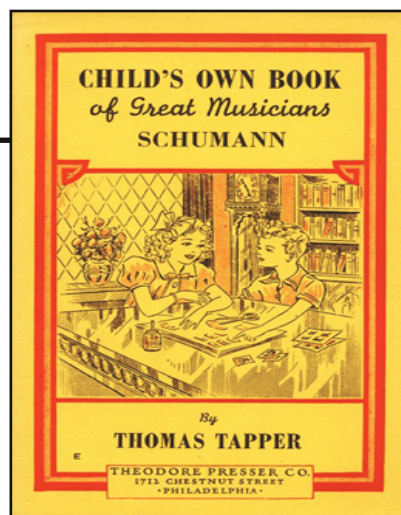
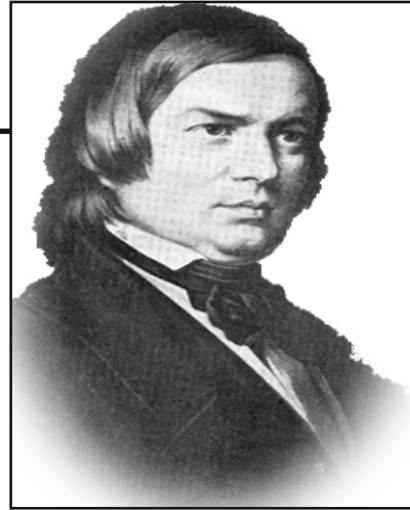


# Schumann



Handwriting practice area consisting of multiple sets of horizontal lines. Each set includes a solid top line, a dashed middle line, and a solid bottom line, providing a guide for letter height and placement.

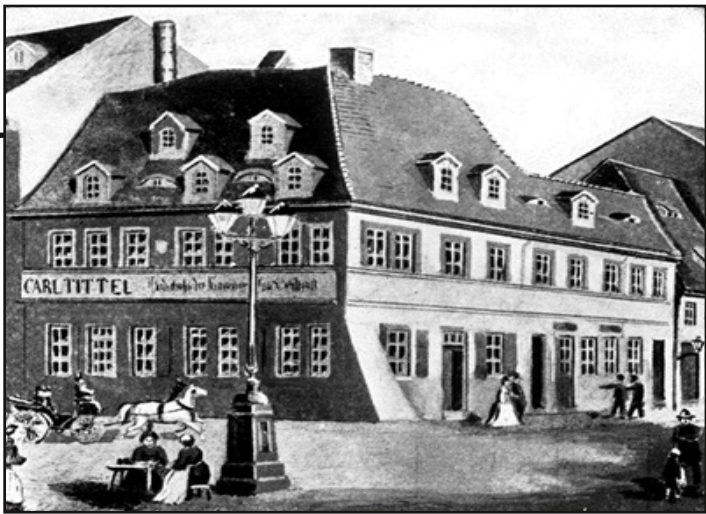
# Robert Schumann



June 8, 1810 – July 29, 1856

Handwriting practice area with multiple sets of lines. Each set consists of a solid top line, a dashed middle line, and a solid bottom line.

# Schumann Home



Handwriting practice lines consisting of solid top and bottom lines with a dashed middle line, repeated multiple times for practice.

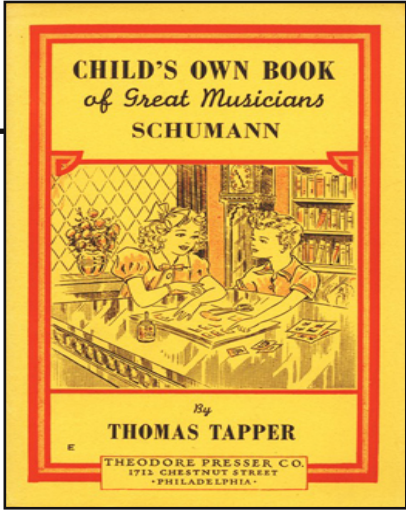
# Clara Schumann



Handwriting practice area with multiple sets of lines. Each set consists of a solid top line, a dashed middle line, and a solid bottom line. There are five such sets of lines arranged vertically within a large rectangular frame.

The image shows a handwriting practice sheet. It features a large rectangular frame containing ten sets of horizontal lines for writing. Each set consists of three lines: a solid top line, a dashed middle line, and a solid bottom line. In the top right corner of the main frame, there is a smaller, empty rectangular box. The entire sheet is designed for practicing letter formation and alignment.

# Schumann




---

---

---

---

---

---

---

---

---

---

---

---

---

---

---

---

---

---

---

---

---

---

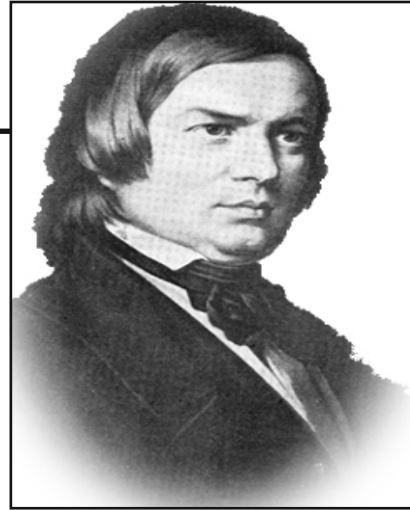
---

---

---

---

# Robert Schumann



June 8, 1810 – July 29, 1856

---

---

---

---

---

---

---

---

---

---

---

---

---

---

---

---

---

---

---

---

---

---

---

---

---

---

---

---

---

---

# Schumann Home





# Clara Schumann



---

---

---

---

---

---

---

---

---

---

---

---

---

---

---

---

---

---

---

---

---

---

---

---

---

---

---

A blank lined paper template. The page features a large rectangular border. Inside this border, there are 20 horizontal lines for writing. The lines are evenly spaced and extend across most of the page width. On the right side of the page, there is a smaller, empty rectangular box that overlaps the main writing area. This box is positioned in the upper right quadrant of the page.