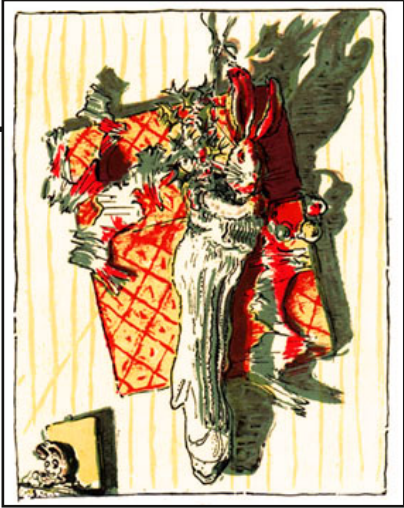


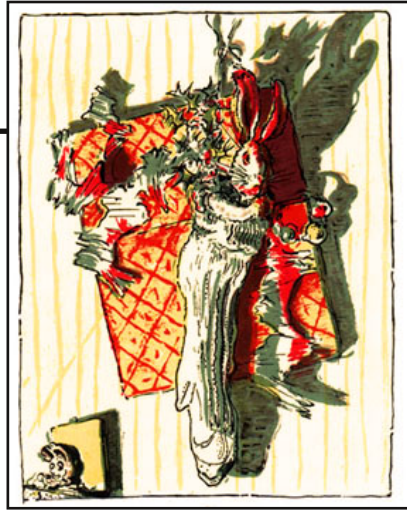
# The Velveteen Rabbit



Handwriting practice area consisting of multiple sets of horizontal lines. Each set includes a solid top line, a dashed middle line, and a solid bottom line. There are four such sets of lines, providing space for writing practice.

The image shows a handwriting practice sheet. It features a large rectangular frame containing ten sets of horizontal lines. Each set consists of three lines: a solid top line, a dashed middle line, and a solid bottom line. In the top right corner of the main frame, there is a smaller, empty rectangular box. The entire sheet is designed for practicing letter formation and alignment.

# The Velveteen Rabbit



---

---

---

---

---

---

---

---

---

---

---

---

---

---

---

---

---

---

---

---

---

---

---

---

This image shows a blank sheet of lined paper designed for writing. The page features a large rectangular border. Inside this border, there are 20 horizontal lines spaced evenly down the page. On the right side of the page, there is a smaller, empty rectangular box that overlaps the main writing area. This box is positioned in the upper right quadrant of the page. The lines are solid black, and the background is white.