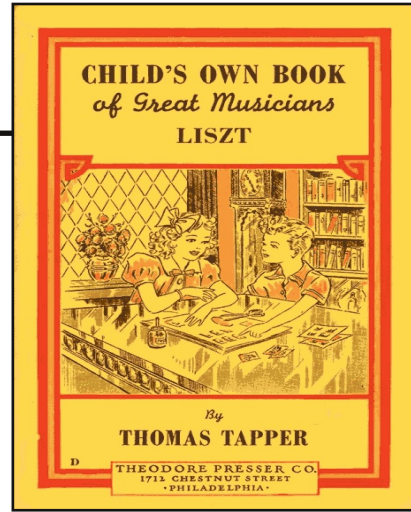
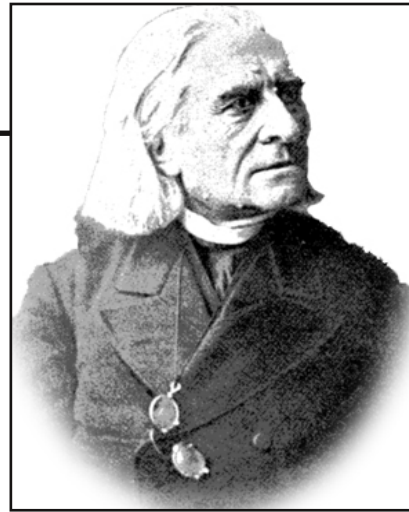


Liszt



Handwriting practice area with multiple sets of lines. Each set consists of a solid top line, a dashed middle line, and a solid bottom line. There are 10 such sets of lines arranged vertically on the page.

Franz Liszt

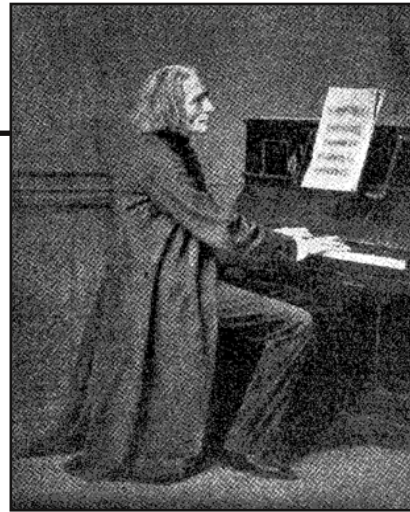


October 22, 1811 – July 31, 1886

Handwriting practice lines consisting of a solid top line, a dashed middle line, and a solid bottom line.

Multiple sets of handwriting practice lines, each consisting of a solid top line, a dashed middle line, and a solid bottom line.

Liszt at the Piano



Handwriting practice area with multiple sets of lines. Each set consists of a solid top line, a dashed middle line, and a solid bottom line. There are 10 such sets of lines arranged vertically within a large rectangular frame.

The image shows a handwriting practice sheet. It features a large rectangular frame containing several sets of horizontal lines for writing. Each set consists of three lines: a solid top line, a dashed middle line, and a solid bottom line. There are 10 such sets of lines arranged vertically. In the upper right corner of the main writing area, there is a smaller, empty rectangular box, likely intended for a student's name or a drawing. The entire sheet is designed for practicing letter formation and alignment.

A blank sheet of lined paper with a rectangular box on the right side. The paper has horizontal lines for writing. The box is positioned in the upper right quadrant of the page.