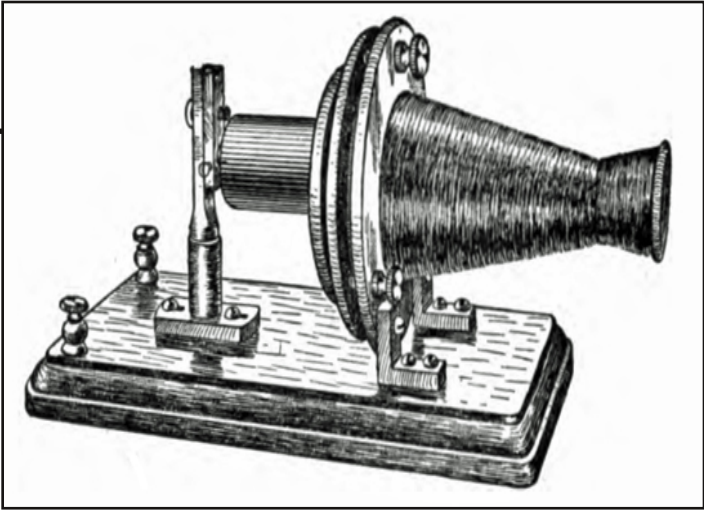


The Telephone



Handwriting practice lines consisting of solid top and bottom lines with a dashed midline. There are five sets of these lines arranged vertically within the page's border.

Alexander Graham Bell

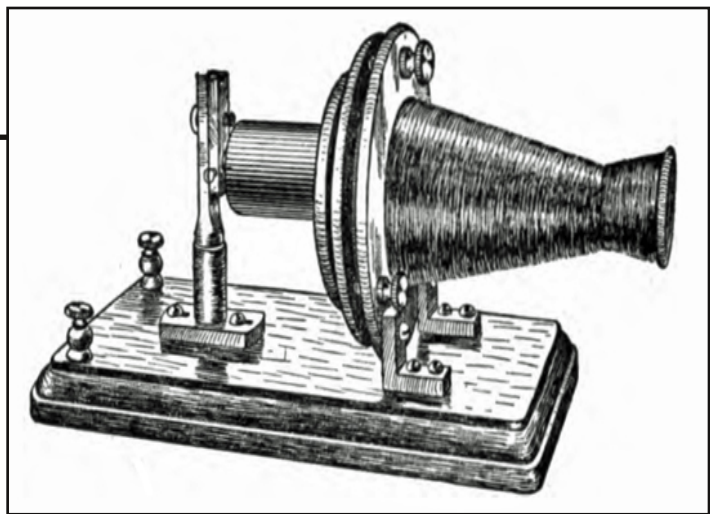


March 3, 1847 – August 2, 1922

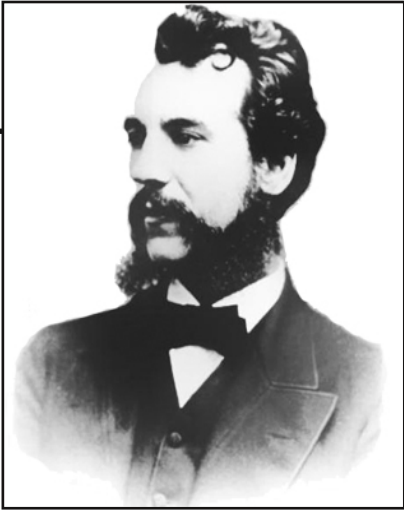
Handwriting practice area with multiple sets of lines. Each set consists of a solid top line, a dashed middle line, and a solid bottom line. There are 10 such sets of lines arranged vertically.

The image shows a handwriting practice sheet. It features a large rectangular frame containing ten sets of horizontal lines. Each set consists of three lines: a solid top line, a dashed middle line, and a solid bottom line. In the top right corner of the main frame, there is a smaller, empty rectangular box. The entire sheet is designed for practicing letter formation and alignment.

The Telephone



Alexander Graham Bell



March 3, 1847 – August 2, 1922

A large rectangular frame containing a series of horizontal lines for writing. The lines are spaced evenly and extend across most of the width of the frame, leaving a small margin on the right side. The lines are intended for a student to write their own notes or a report about Alexander Graham Bell.

A blank lined paper template. The page features a large rectangular border. Inside this border, there are 20 horizontal lines for writing. The lines are evenly spaced and extend across most of the page width. On the right side of the page, there is a smaller, empty rectangular box that overlaps the main writing area. This box is positioned in the upper right quadrant of the page.